

## New England Wind Project

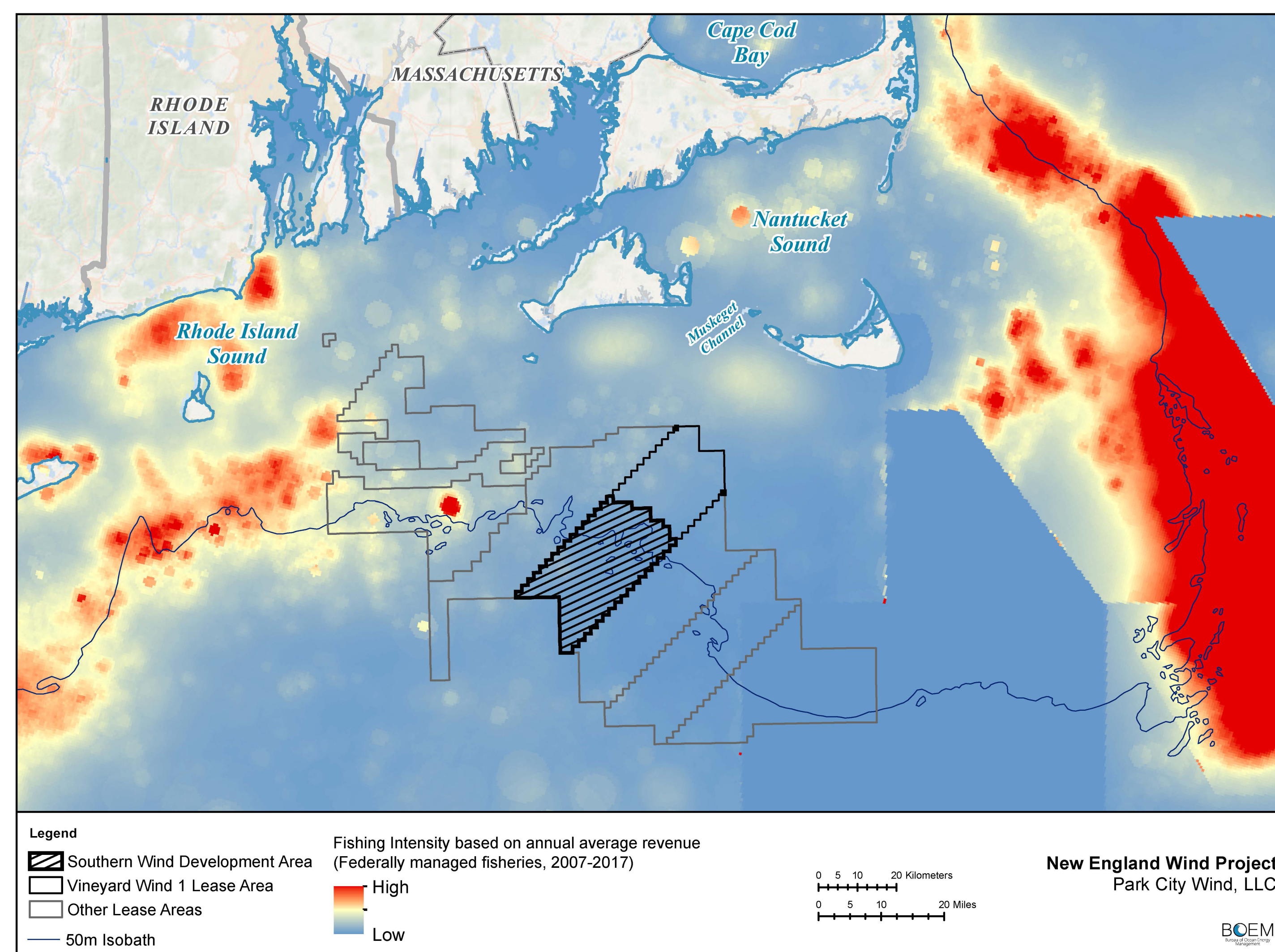
# Potential Impacts on Commercial Fisheries and For-Hire Recreational Fishing

## Construction

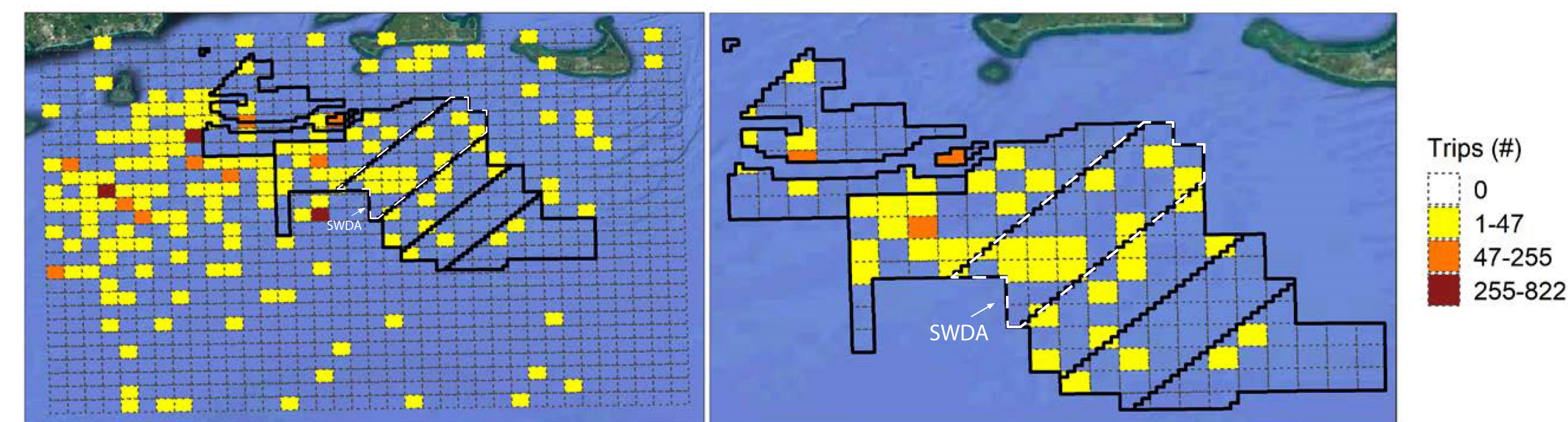
- Displacement of fishing vessels during installation of WTGs/ESPs and during cable laying
- Increased vessel traffic in ports and within offshore work areas

## Operations

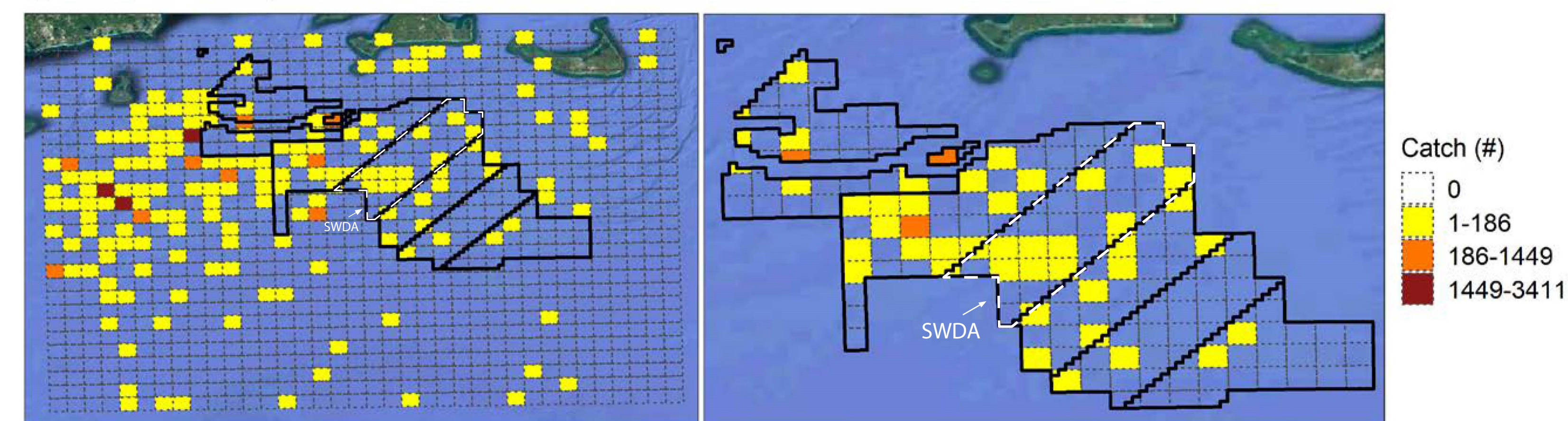
- Long-term space use conflicts for fishing and transiting within the SWDA
- Increased risk of allision or collision for fishing vessels in the SWDA
- Habitat modification in the SWDA and along the OECC
- Artificial reef effect may increase density of structure-oriented fish
- Potential for gear entanglement and loss due to interactions with scour protection and cable protection



Large Pelagics Survey: All highly migratory species  
By trips (2002 - 2018)



By catch (2002 - 2018)



Source: Kneebone, J., and C. Capizzano. 2020. A Comprehensive Assessment of Baseline Recreational Fishing Effort for Highly Migratory Species in Southern New England and the Associated Wind Energy Area. New England Aquarium, Anderson Cabot Center for Ocean Life, Boston, MA, Final report to Vineyard Wind. May 4, 2020. 3.8, 3.15



For more information on BOEM's Renewable Energy Program, visit [www.boem.gov/Renewable-Energy](http://www.boem.gov/Renewable-Energy)